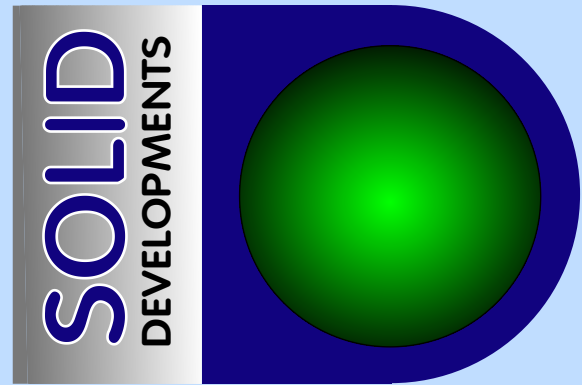


# Company Profile



## *Your ideas - in perspective*

Solid Developments is a consultancy specialising in Product Design.

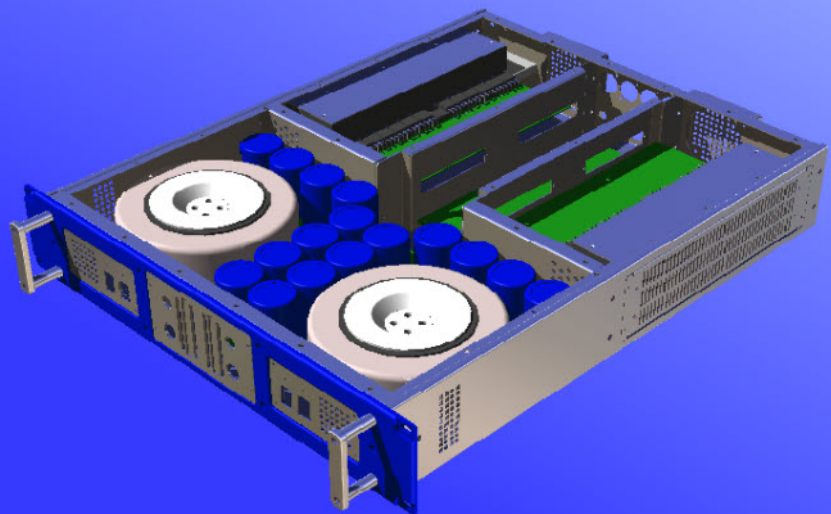
With the aid of the latest solid modeling CAD techniques, we aim to put your ideas into perspective!

Solid Developments can help you from your initial concept sketch, right through to the prototype unit.

Together with our industry associates, we can even help you put your idea into full production.

### Services

- 2D and 3D CAD
- Solid modeling
- Mechanical design
- Electronic design
- PCB design
- Full product design
- Product visualisation
- Prototyping
- Technical writing
- System design



## Activities and approach

Solid Developments works with the client (in conjunction with manufacturers, architects, other designers and engineers if necessary) to produce specifications and designs, then where required, utilises specialist suppliers and subcontractors to provide equipment, metalwork, precision engineering, joinery, wiring and assembly.

Extensive use is made of computer systems in the production of engineering drawings, diagrams, PCB layouts and artworks as well as for wiring plans, specification sheets and manuals. This allows clear and precise documentation that is easily updated, should the need arise.

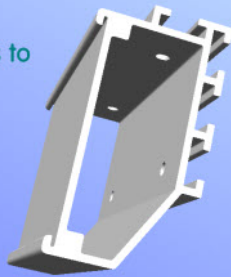
## Scope

Solid Developments is a small company but we have access to a wide range of external services and support, courtesy of the contacts and associates that we have built up within the industry over the years. We can therefore offer a 'Turnkey' solution to most customers' requirements.

### We have long established access to Companies who specialise in:

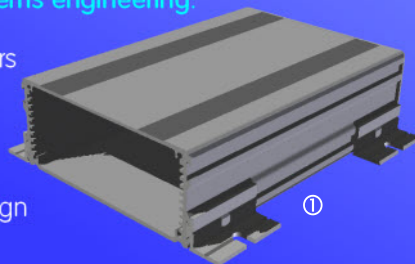
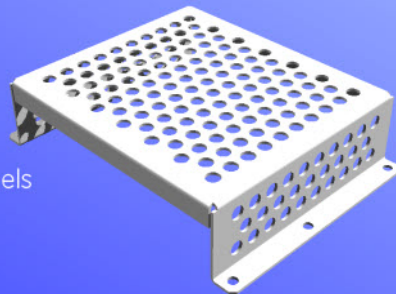
#### Manufacturing:

Precision sheet metalwork  
Machining  
Casting  
Extrusions  
Plastics  
(sheet, tube, foam, composite and moulding)  
Joinery  
Welding (Including stainless and aluminium)  
Electroplating  
Anodising  
Wet spray painting  
Powder coating  
Engraving  
Silk-screening  
Membrane panels and labels  
PCB production  
Assembly  
Wiring  
Subcontract manufacturing  
Installation



#### Electronic design and systems engineering:

Audio signal processing  
High power audio amplifiers  
Power supplies  
Video electronics  
DSP design  
Acoustics  
19" rack and sub-rack design  
Technical writing



#### Computers:

Systems design and implementation  
Programming (Visual Basic, Delphi, Java, Visual dBase)

And many more .....

## Who are Solid Developments?

Solid Developments was formed in 2002 by Adrian White, an engineer with over 30 years experience in electronics and mechanics.

He has worked with both the industrial and commercial sectors including:

Universities and research establishments  
Environmental test  
Instrumentation  
Medical physics  
Aerospace & Defence  
Industrial power amplifier applications  
Audio & Video recording and production studios  
Broadcast electronics manufacturing  
Special effects equipment  
Professional audio products  
Sound reinforcement

As a designer, he has helped to create many new items of equipment and put them into production. He has worked on designs for several prestigious projects and companies.

#### Adrian's former clients and employers include:

Airports UK Ltd.  
Avtech Ltd.  
Bel Digital Audio Ltd.  
Beran Instruments Ltd.  
Civil Aviation Authority  
Derritron Electronics  
Electricity Research and Development Centre  
Electronic Brokers Ltd.  
Eurosonic Studios - Spain  
GAS Electronic Systems  
Genesis  
Greenpeace Communications Ltd.  
Institute of Child Health (ICH)  
IGE Medical Systems Ltd.  
Independent Television News  
Johnson Matthey PLC.  
KeyMed  
Michael Stevens and Partners Ltd. (Chromated)  
Motor Industry Research Association  
Ministry of Defence  
RMC Ltd.  
Surrey Medical Imaging Systems Ltd.  
Tiphook PLC.  
University of Wales



35 Lower Park Road, Hastings

East Sussex TN34 2LA

Tel: +44 (0)1424-200253

Fax: +44 (0)5600-753026

E-Mail: [info@solid-developments.co.uk](mailto:info@solid-developments.co.uk)

Internet: [www.solid-developments.co.uk](http://www.solid-developments.co.uk)

① Solid model of extruded box design, courtesy of Lincoln Binns Ltd.